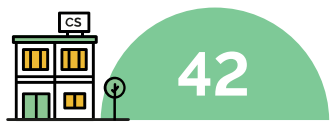




OBSERVATOIRE DES CENTRES SOCIAUX ET DES ESPACES DE VIE SOCIALE

L'animation de la vie sociale



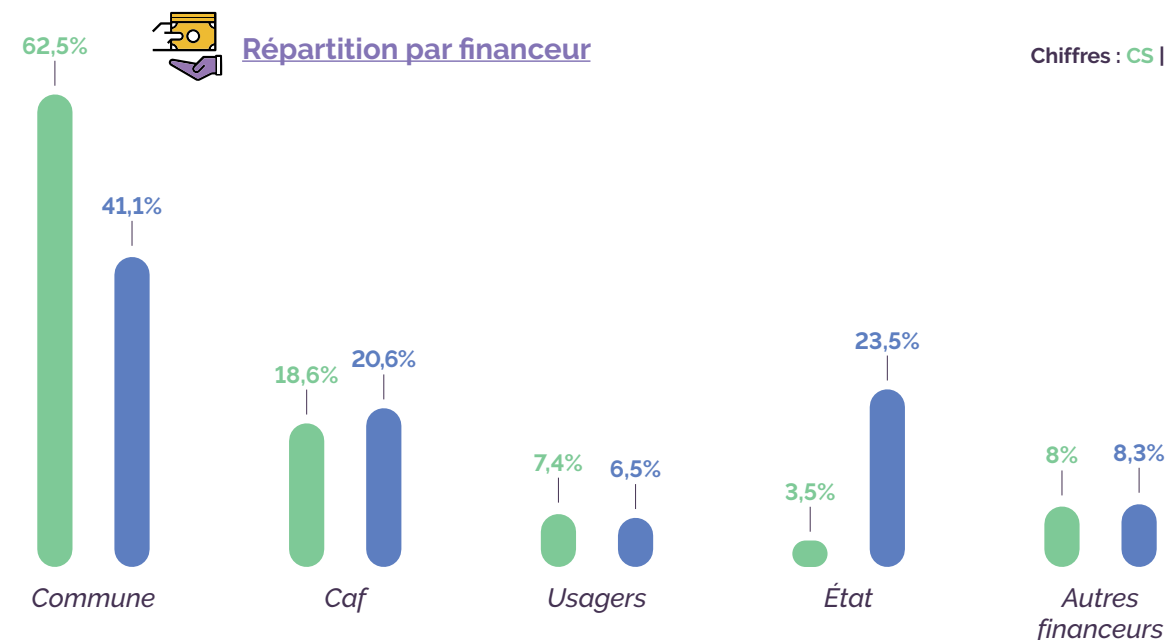
CENTRES SOCIAUX



ESPACES DE VIE SOCIALE



Un modèle économique atypique



Le travail associé au service du projet

CENTRES SOCIAUX



des **STRUCTURES** ont eu à minima
un salarié ayant suivi **une formation
qualifiante ou non qualifiante**

ESPACES DE VIE SOCIALE



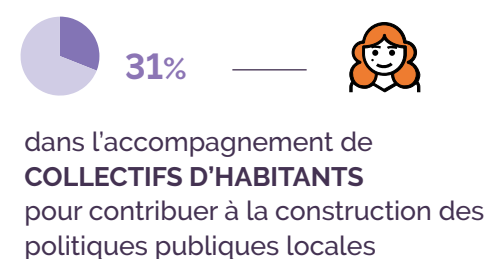
STAGIAIRES en moyenne
sur les structures.

Des lieux de démocratie et d'émancipation

TRANSITION DÉMOCRATIQUE

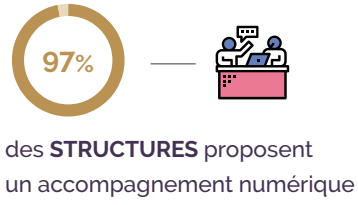
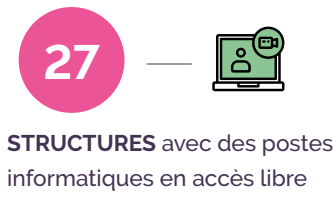
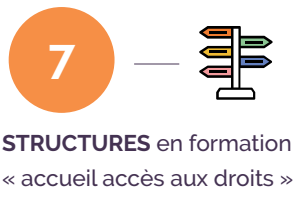


600 au pilotage
1 008 aux activités

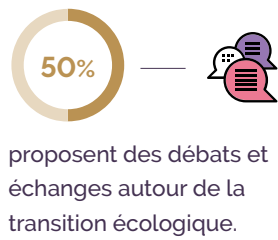
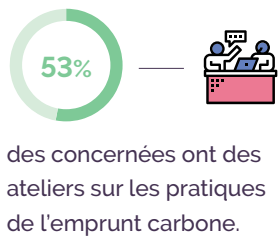
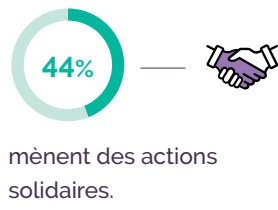
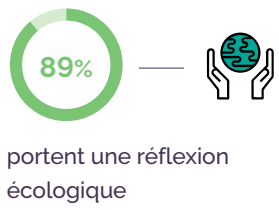


Les structures face aux grands défis de transition

UNE TRANSITION NUMÉRIQUE

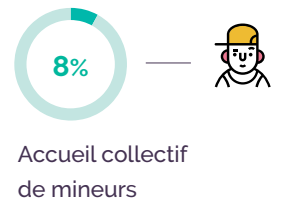
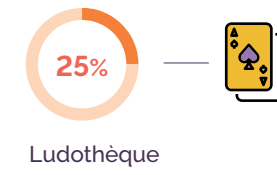
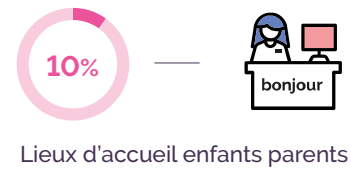


UNE TRANSITION ÉCOLOGIQUE

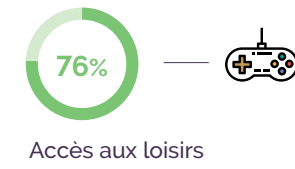
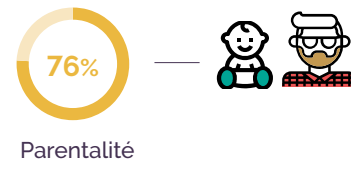


La petite enfance

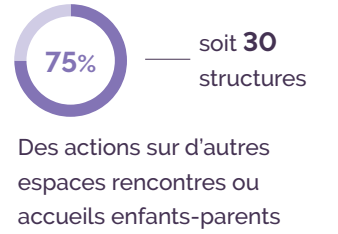
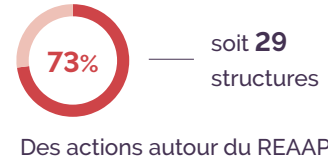
ACTIONS DÉDIÉES À LA PETITE ENFANCE (en % de centres sociaux concernés)



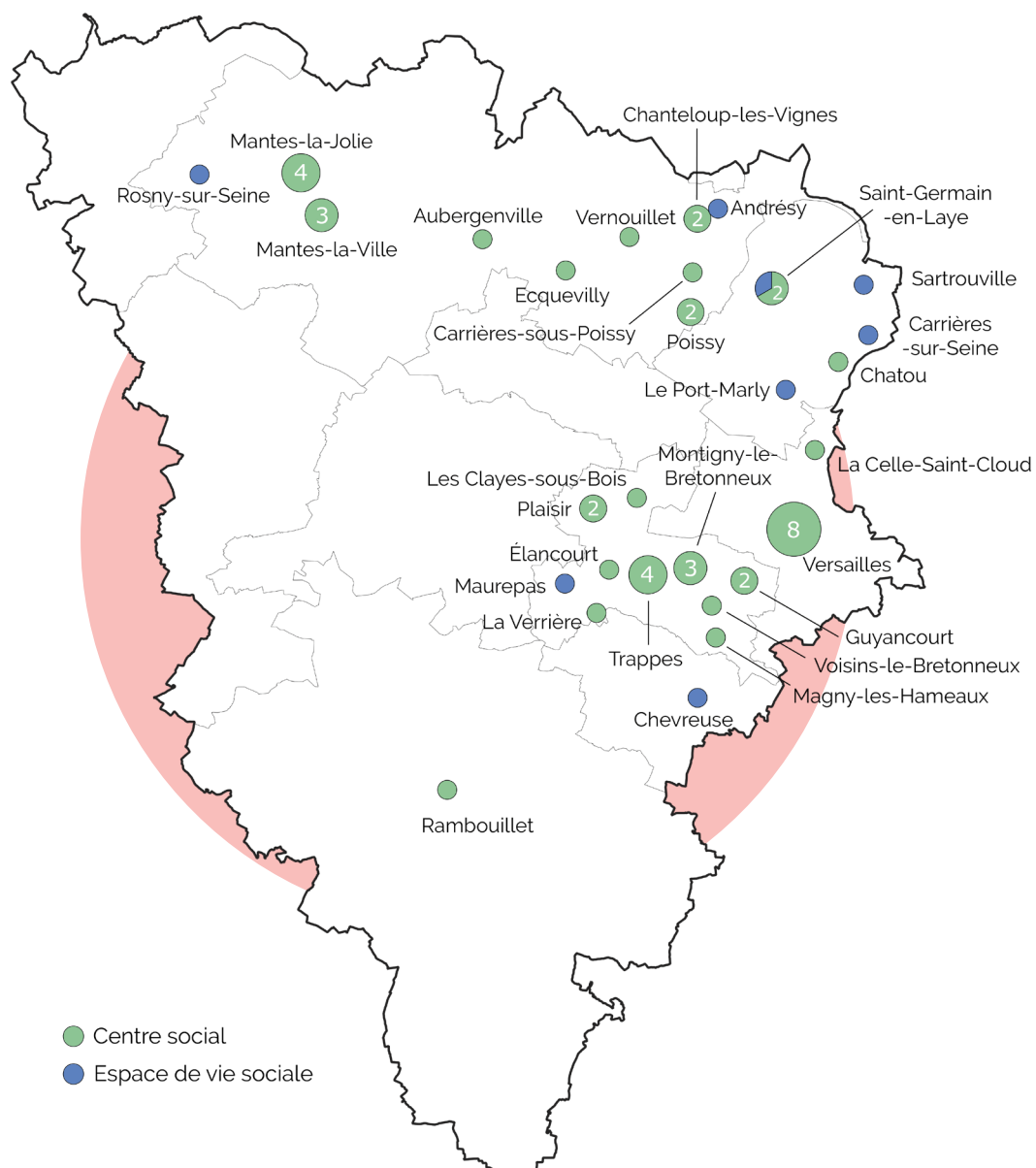
THÉMATIQUES DES ACTIONS DÉVELOPPÉES POUR LA PETITE ENFANCE (en % de centres sociaux concernés)



ACTION PROJET FAMILLE



Carte des Yvelines



YVELINES

OBSERVATOIRE des centres sociaux et des espaces de vie sociale



© photos couverture : Pierre Leray, Marta Nascimento, Lucile Barbery et Daniel Dabrieux